

FREE PAPERCRAFT TEMPLATE

PIRANHA PLANT

FROM SUPER MARIO

PAPER / PAPEL

A4

SIZE / TAMAÑO

8 X 9 X 6 CM

DIFFICULTY / DIFICULTAD



MADE BY / HECHO POR

HANZMADE



ENGLISH INSTRUCTIONS

BASICS

- ◆ You could find some millimetrical mistakes as the measure was taken directly from the papercraft model I created.
- ◆ Adult supervision for kids needed.
- ◆ Scissors/cutter, ruler and transparent glue are needed.
- ◆ Glue is needed on every flap.
- ◆ You can use the back side of the cutter/x-acto knife for a better folding
- ◆ Only print the pages you are going to cut or use

PRO TIPS

- ◆ This can be printed in smaller or bigger sizes without pixelation.
- ◆ Flaps are not needed if you print it on a thick paper, but the glue should be carefully used on the edges of the paper (check some of my longer videos).
- ◆ You can use a syringe with flat top niddle (not pointed).
- ◆ Use your imagination on the 3rd page, where you can customize this model in any possible way.
- ◆ Try to cut exactly where the border of each shape is, however if you see a white little section you can paint it with the best matching color to cover it.

EXTRAS

- ◆ --- Dashed line: Cut.
- ◆ — Line: Fold.
- ◆ ● Drop: Glue, normally where the cut shape is a rectangle but the final shape should be a circle.
- ◆ ↻ Flip it and glue both parts so the colors are visible on both sides. Normally you should do this step first before gluing other parts.

Please contact me if you find any issue on this model
or if you want to share your model with me: info@hanzmade.net

DON'T FORGET TO SUBSCRIBE MY YOUTUBE CHANNEL: HANZMADE

INSTRUCCIONES EN ESPAÑOL

LO BÁSICO

- ◆ Podrás encontrar algunos errores milimétricos, ya que las medidas se tomaron directamente del modelo de papel que he creado.
- ◆ Es necesaria la supervisión de un adulto para niños y niñas
- ◆ Tijeras/cuchilla, regla y pegamento son necesarios
- ◆ El pegamento es necesario para todas las pestañas
- ◆ Puedes usar la parte de atrás de la cuchilla/exacto para un mejor doblar
- ◆ Imprime únicamente las páginas que vayas recortar o usar

PRO TIPS

- ◆ Puedes imprimirlo más pequeño o más grande sin que se pixelee.
- ◆ Las pestañas no son necesarias si lo imprimes en papel grueso, pero el pegamento debe aplicarse cuidadosamente en los bordes del papel (revisa algunos de mis videos largos).
- ◆ Puedes usar una jeringa con la punta de la aguja plana (no filosa).
- ◆ Usa tu imaginación en la 3ra página, en donde puedes personalizar este modelo de cualquier forma posible.
- ◆ Trata de cortar exactamente en el borde de cada forma, pero si ves una pequeña porción blanca puedes pintarlo con el color más parecido para cubrirlo.

EXTRAS

- ◆ --- Línea discontinua: Cortar.
- ◆ — Línea: Doblar.
- ◆ ● Gota: Pegar, donde normalmente la forma recortada es un rectángulo pero la forma final debería ser un círculo.
- ◆ ↻ Da la vuelta y pega las 2 partes para que los colores sean visibles en ambas caras. Normalmente este paso se hace primero antes de pegar otras partes.

Por favor contáctame si encuentras algún error en este modelo
o si quieres compartir tu modelo conmigo: info@hanzmade.net

NO OLVIDES SUSCRIBIRTE A MI CANAL DE YOUTUBE: HANZMADE

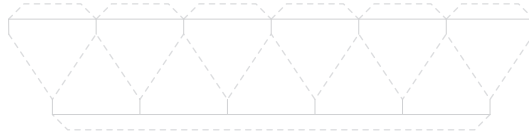
 COPYRIGHT 2022 - HANZMADE.NET/PAPERCRAFT

FREE PAPERCRAFT TEMPLATE BY HANZMADE:

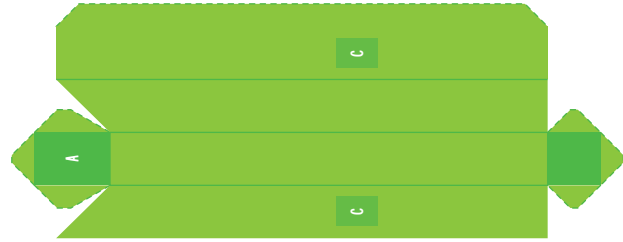
PIRANHA PLANT



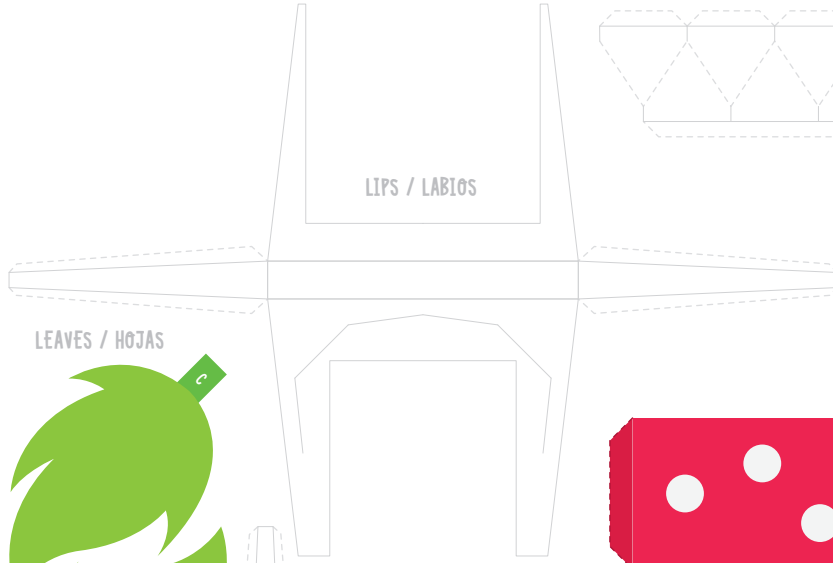
TEETH / DIENTES



STEM / TALLO



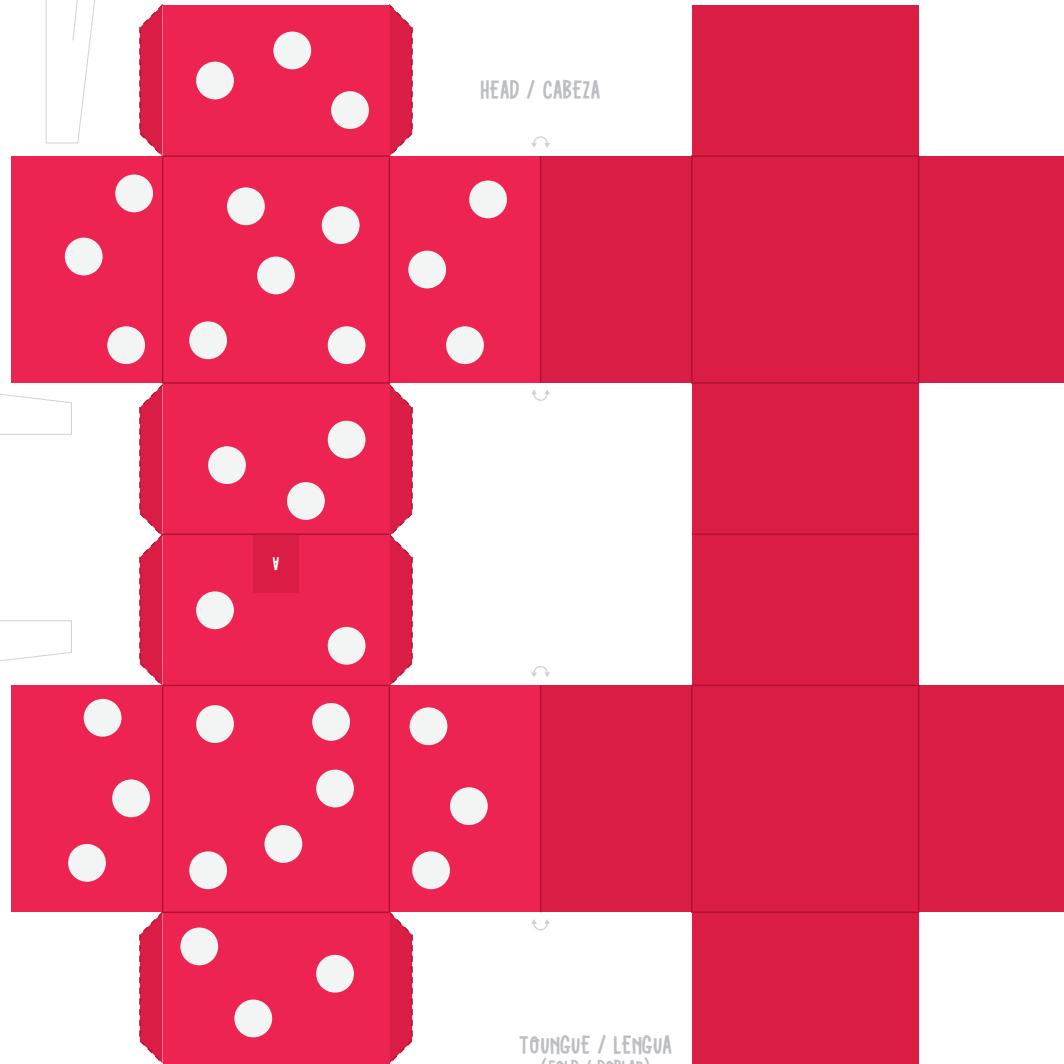
LIPS / LABIOS



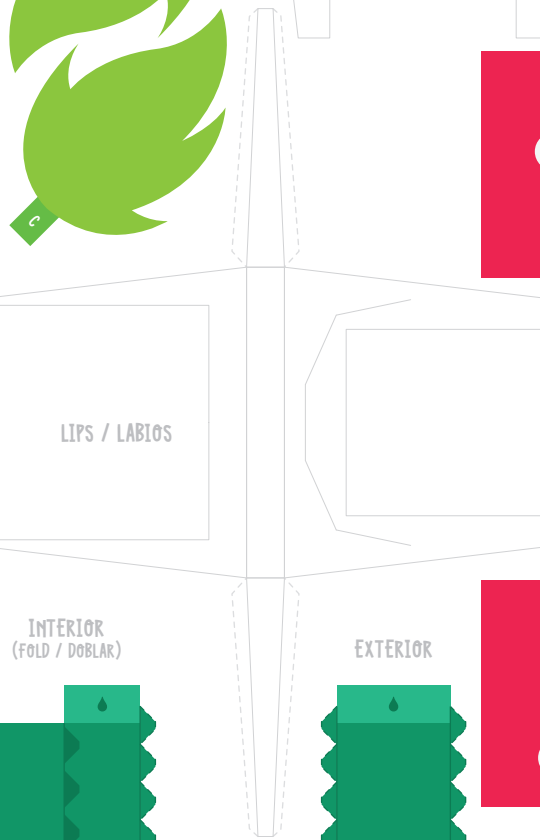
LEAVES / HOJAS



HEAD / CABEZA

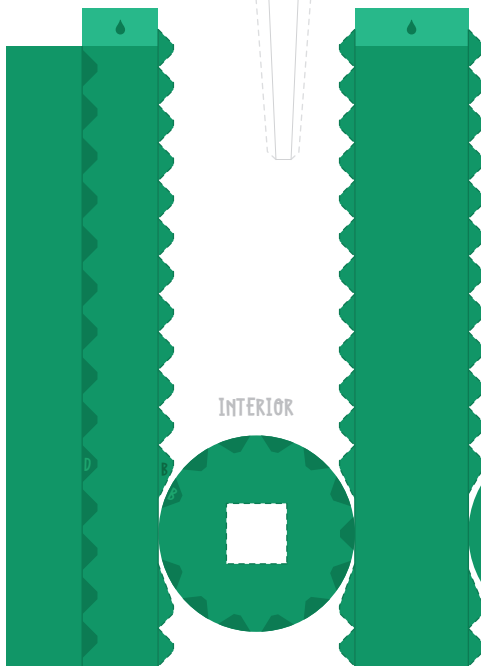


LIPS / LABIOS



INTERIOR
(FOLD / DOBLAR)

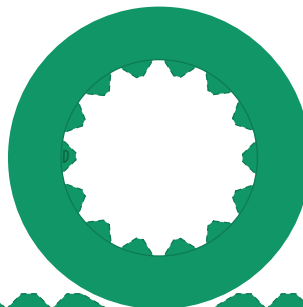
EXTERIOR



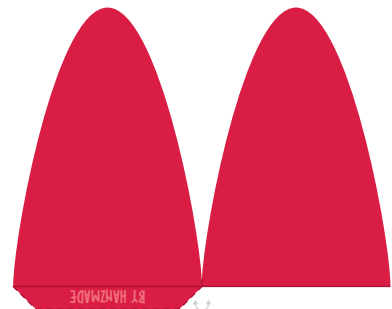
INTERIOR

BASE

TOP / PARTE SUPERIOR



TONGUE / LENGUA
(FOLD / DOBLAR)



FREE CUSTOMISABLE PAPERCRAFT TEMPLATE BY HANZMADE:

PIRANHA PLANT



TEETH / DIENTES

LIPS / LABIOS

LEAVES / HOJAS

STEM / TALLO

HEAD / CABEZA (FOLD / DOBLAR)

LIPS / LABIOS

INTERIOR (FOLD / DOBLAR)

EXTERIOR

TOP / PARTE SUPERIOR

BASE

TONGUE / LENGUA (FOLD / DOBLAR)

The image contains a detailed papercraft template for a Piranha Plant. It includes various parts: a set of teeth (TEETH / DIENTES) with a dashed line for cutting and a solid line for folding; two sets of lips (LIPS / LABIOS) with a central notch and a dashed line for cutting; two leaves (LEAVES / HOJAS) with a wavy edge and a dashed line for cutting; a stem (STEM / TALLO) with a rectangular body and a small tab (A) for assembly; a head (HEAD / CABEZA) with a grid of circles and a dashed line for cutting; a tongue (TONGUE / LENGUA) with a pointed tip and a dashed line for cutting; and a base (BASE) with a circular top (TOP / PARTE SUPERIOR) and a circular bottom (BASE) with a dashed line for cutting. The template also includes an interior (INTERIOR) and exterior (EXTERIOR) view of the head and tongue, and a small tab (D) for the base. The template is designed to be printed and assembled into a Piranha Plant character.